



AN ISO 9001 : 2015
CERTIFIED COMPANY

BONNA-FLEX[®]

STAR JAW COUPLINGS



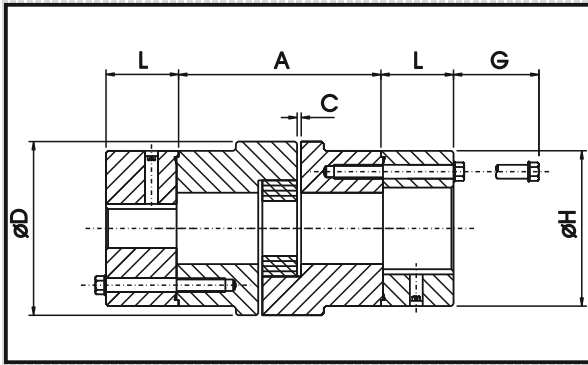
CATALOGUE NO. C2-SWQC- NO 10

Manufacturer & Exporter :

HASMUKHLAL & BROTHERS



RRB - Type C.I. Spacer Star Jaw Coupling



◆ Features :

- Simple Construction
- Quick Easy Installation
- No Special Tools Required
- Designed for "back" pull out pumps
- Driven Unit is required like compressors, generators, blowers etc.
- Do not need to dismount drive for maintenance

◆ Technical Details

- Available in range up to 100HP/24 kg
- Range from 21 nm to 260 nm
- Rated power from 0.21 kW to 2.76 kW at 100 rpm

SIZE	DIMENSIONS IN MM								RATING 100 RPM KW	RATING 1500 RPM KW	RATING 3000 RPM KW	RATED TORQUE Nm	TORSIONAL STIFFNESS Nm / Radian
	MINIMUM BORE	MAXIMUM BORE	SPACER LENGTH DISTANCE BETWEEN SHAFT ENDS (DBSE) A	SPACER OD Ø D	ADAPTOR BODY LENGTH B	ADAPTOR BODY OD Ø H	G	C					
RRB 095	10	30	90, 100, 135, 140	54	25	54	20	2	0.220	3.30	6.60	21.10	275
RRB 100	10	38		65	30	65	20	2	0.490	7.35	14.70	46.40	688
RRB 110	15	42	90, 100, 135, 140, 180	85	35	76	21	3	0.930	13.95	27.90	89.00	1719
RRB 150	15	48		96	40	90	27	3	1.490	22.35	44.70	141.00	2120
RRB 190	20	55		115	46	102	27	3	2.010	30.15	60.30	190.00	3495
RRB 225	20	65		127	52	115	31	3	2.760	41.40	82.80	265.00	4584

SELECTION PROCEDURE : (A) SERVICE FACTOR - Determine the required SERVICE FACTOR for your application from the table (B) DESIGN POWER - Multiply the normal running power of driven machinery by the service factor. (C) COUPLING SIZE - Depending upon the type of coupling required, refer to respective power rating table. Power rating can be interpolated in relation to speed parameters. Power must be equal or greater than the DESIGN POWER found. (D) BORE SIZE - Check from the dimension table to see the bore capacity of the coupling is adequate. If not then select next higher size of coupling.

EXAMPLE : A coupling is required to transmit 45 kw. from an electric motor which runs at 3000 rpm to a centrifugal compressors for 10 hours a day, the motor shaft diameter is 58mm and the compressors shaft diameter is 48mm.

(A) SERVICE PER 1000 RPM :

First of all convert the power rating for 100 rpm. $\frac{45 \times 100}{3000} = 1.5$ kw. now, power rating is 1.5 kw per 100 rpm.

(B) SERVICE FACTOR : From the table the service factor is 1.25 **(C) DESIGN POWER :** Design power - $1.5 \times 1.25 = 1.88$ kw.

(D) DOUBLE SIZE : Reading from 100 rpm in the speed column of table of BRL & BRSW 2.02 kw is the first power to exceed the DESIGN POWER of 1.88 kw. The Size of the coupling specified in the column is BRL/BSW - 190. **(E) BORE SIZE :** Table of BRL & BRSW shows that both shaft diameter are within the range available.

BONNA-FLEX SERVICE FACTORS	TYPE OF DRIVING UNIT							
	TYPE OF DRIVEN MACHINE		Electric motors & steam Turbines		Internal Combustion Engines (more than 5 cylinders) steam Engines water turbines		Internal Combustion Engines (more than 6 cylinders) steam engines. water turbines.	
	Duty hours per day		Duty hours per day		Duty hours per day		Duty hours per day	
	12 & under	over 12	12 & under	over 12	12 & under	over 12	12 & under	over 12
UNIFORM LOAD : Agitators, Belt Conveyors, Blowers and exhausters expect positive displacement, Brewing machinery, Centrifugal Blowers Centrifugal Fans & Conveyors, Compressors and Pumps, Dynamometers, Evaporator, Fans up to 7.5 kw. Feeders, Generators, Line shafts, Sewage Disposal Equipment Textile machines, working machinery.	1	1.25	1.25	1.5	1.5	2.0	1.5	2.0
MODERATES SHOCK Beaters, Bucket Elevators, Centrifugal Compressors, Clay working machinery, Chine hoists, Fans over 7.5 kw. Food industry, Gear Pumps, General machine Tools, Laundry machinery, Marine propellers, Non-Uniformity loaded centrifugal pumps oil industry. Paper mill beaters and winders. Paper mill machinery, printing press, Rotary mills & Pumps, Rotary Screens. Rubber extrudes, Shredders, Textile & wood work machinery	1.25	1.5	1.5	2.0	2.0	2.5	2.0	2.5
HEAVY SHOCK : Bucket elevators, Cooling tower fans, Crushers, Foundry machinery, Freight & Passengers elevators, Hammer mills, Metal mills & Presses, Paper mill calenders, Piston compressors and Pumps, Positive displacement blowers, Presses & pulp grinders, Pulverisers, Reciprocating compressors and pulps, Reciprocating conveyors, Rubber machinery "Banbury mixers & mills" Shakers, Vibrating screens, Welding sets, Winches and wire drawing machines.	1.5	2.0	2.0	2.5	2.5	3.0	2.5	3.0