



AN ISO 9001 : 2015  
CERTIFIED COMPANY

**BONNA-FLEX**<sup>®</sup>

# STAR JAW COUPLINGS



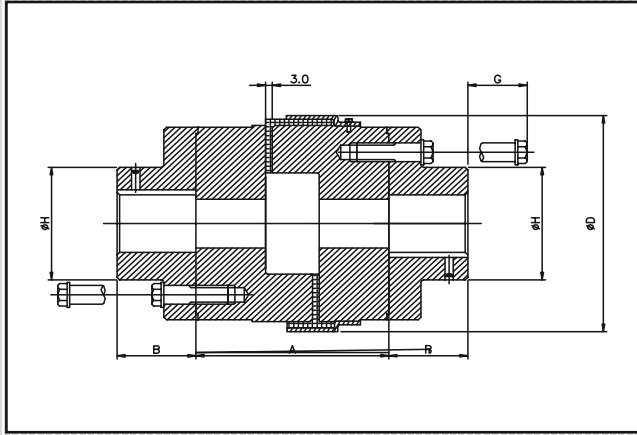
CATALOGUE NO. C2-SWQC- NO 10

Manufacturer & Exporter :

**HASMUKHLAL & BROTHERS**



## SWQ Type C.I. Spacer with Metal Ring - Rubber T Cushion Coupling



### ◆ SWQ- Coupling

- Simple Construction
- Having wide range of application
- High torque range



### ◆ Technical Details

- Rated torque ranges from 325 Nm to 4300 Nm
- Rated power from 3.5 kW to 45 kW

SIZE	DIMENSIONS IN MM							C	RATING 100 RPM KW	RATING 1500 RPM KW	RATING 3000 RPM KW	RATED TORQUE Nm	TORSIONAL STIFFNESS Nm / Radian
	MINIMUM BORE	MAXIMUM BORE	SPACER LENGTH DISTANCE BETWEEN SHAFT ENDS (DBSE) A	SPACER OD Ø D	ADAPTOR BODY LENGTH B	ADAPTOR BODY OD Ø H	G						
SWQ 226	25	70	135, 140, 180, 250	141.5	50	134	40	3	3.430	51.45	102.90	324.00	6990
SWQ 276	25	75		161.5	60	135	40	3	5.600	84.00	168.00	532.00	12720
SWQ 280	30	75		196.5	60	130	-	3	8.200	123.00	246.00	782.00	22517
SWQ 295	40	95		243	65	160	-	3	13.400	201.00	-	1279.00	51222
SWQ 2955	50	100		243	65	160	-	3	22.400	336.00	-	2132.00	85428
SWQ 300	50	110		265	80	180	-	3	31.900	478.50	-	3047.00	126395
SWQ 350	50	115		318	90	200	-	3	45.000	675.00	-	4308.00	183633

**SELECTION PROCEDURE :** (A) SERVICE FACTOR - Determine the required SERVICE FACTOR for your application from the table (B) DESIGN POWER - Multiply the normal running power of driven machinery by the service factor. (C) COUPLING SIZE - Depending upon the type of coupling required, refer to respective power rating table. Power rating can be interpolated in relation to speed parameters. Power must be equal or greater than the DESIGN POWER found. (D) BORE SIZE - Check from the dimension table to see the bore capacity of the coupling is adequate. If not then select next higher size of coupling.

**EXAMPLE :** A coupling is required to transmit 45 kw. from an electric motor which runs at 3000 rpm to a centrifugal compressors for 10 hours a day, the motor shaft diameter is 58mm and the compressors shaft diameter is 48mm.

**(A) SERVICE PER 1000 RPM :**

First of all convert the power rating for 100 rpm.  $\frac{45 \times 100}{3000} = 1.5$  kw. now, power rating is 1.5 kw per 1000 rpm.

**(B) SERVICE FACTOR :** From the table the service factor is 1.25 **(C) DESIGN POWER :** Design power -  $1.5 \times 1.25 = 1.88$  kw.

**(D) DOUBLE SIZE :** Reading from 100 rpm in the speed column of table of BRL & BRSW 2.02 kw is the first power to exceed the DESIGN POWER of 1.88 kw. The Size of the coupling specified in the column is BRL/BSW - 190. **(E) BORE SIZE :** Table of BRL & BRSW shows that both shaft diameter are within the range available.

BONNA-FLEX SERVICE FACTORS	TYPE OF DRIVING UNIT					
TYPE OF DRIVEN MACHINE	Electric motors & steam Turbines		Internal Combustion Engines (more than 5 cylinders) steam Engines water turbines		Internal Combustion Engines (more than 6 cylinders) steam engines. water turbines.	
	Duty hours per day		Duty hours per day		Duty hours per day	
	12 & under	over 12	12 & under	over 12	12 & under	over 12
<b>UNIFORM LOAD :</b> Agitators, Belt Conveyors, Blowers and exhausters expect positive displacement, Brewing machinery, Centrifugal Blowers Centrifugal Fans & Conveyors, Compressors and Pumps, Dynamometers, Evaporator, Fans up to 7.5 kw. Feeders, Generators, Line shafts, Sewage Disposal Equipment Textile machines, working machinery.	1	1.25	1.25	1.5	1.5	2.0
<b>MODERATES SHOCK</b> Beaters, Bucket Elevators, Centrifugal Compressors, Clay working machinery, Chine hoists, Fans over 7.5 kw. Food industry, Gear Pumps, General machine Tools, Laundry machinery, Marine propellers, Non-Uniformity loaded centrifugal pumps oil industry. Paper mill beaters and winders. Paper mill machinery, printing press, Rotary mills & Pumps, Rotary Screens. Rubber extrudes, Shredders, Textile & wood work machinery	1.25	1.5	1.5	2.0	2.0	2.5
<b>HEAVY SHOCK :</b> Bucket elevators, Cooling tower fans, Crushers, Foundry machinery, Freight & Passengers elevators, Hammer mills, Metal mills & Presses, Paper mill calenders, Piston compressors and Pumps, Positive displacement blowers, Presses & pulp grinders, Pulverisers, Reciprocating compressors and pulps, Reciprocating conveyors, Rubber machinery "Banbury mixers & mills" Shakers, Vibrating screens, Welding sets, Winches and wire drawing machines.	1.5	2.0	2.0	2.5	2.5	3.0